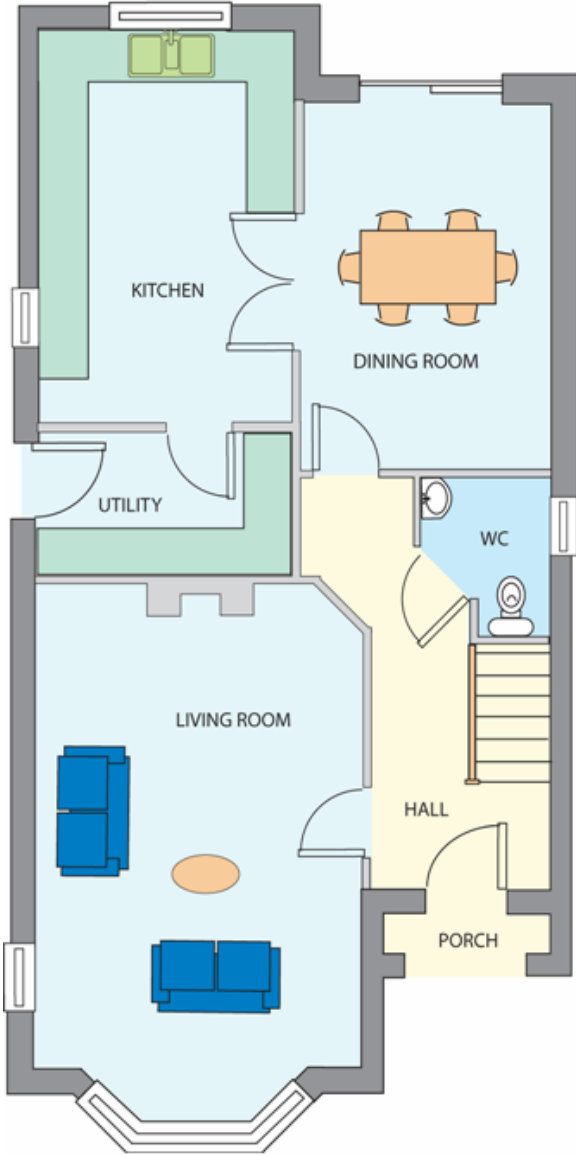
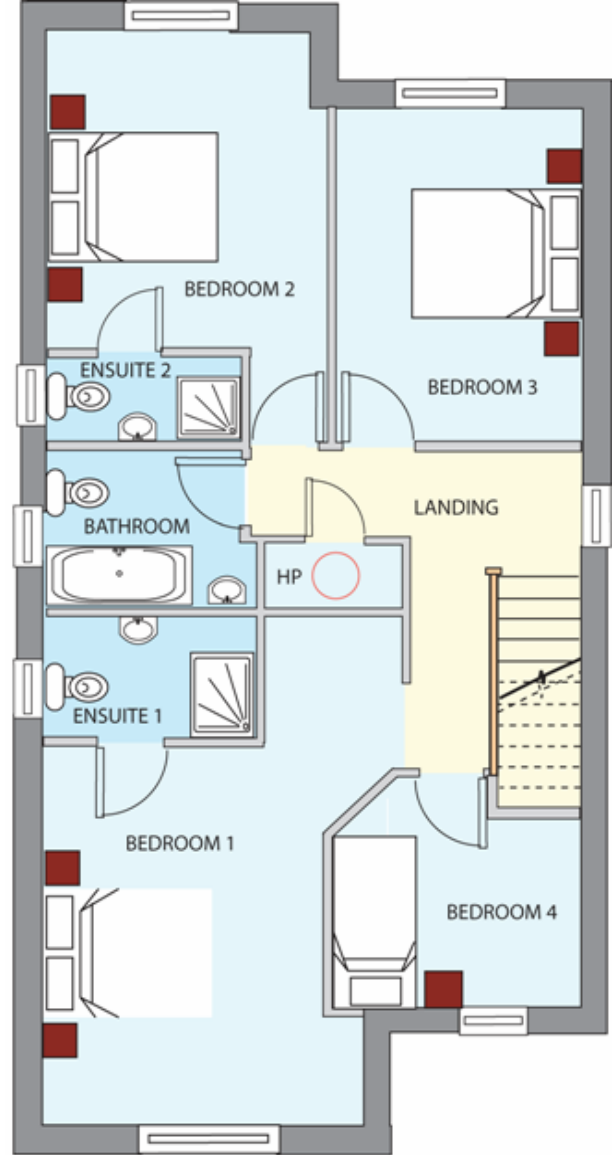


House Type A (147.89 sq. m, 1590 sq. ft.)



Ground Floor

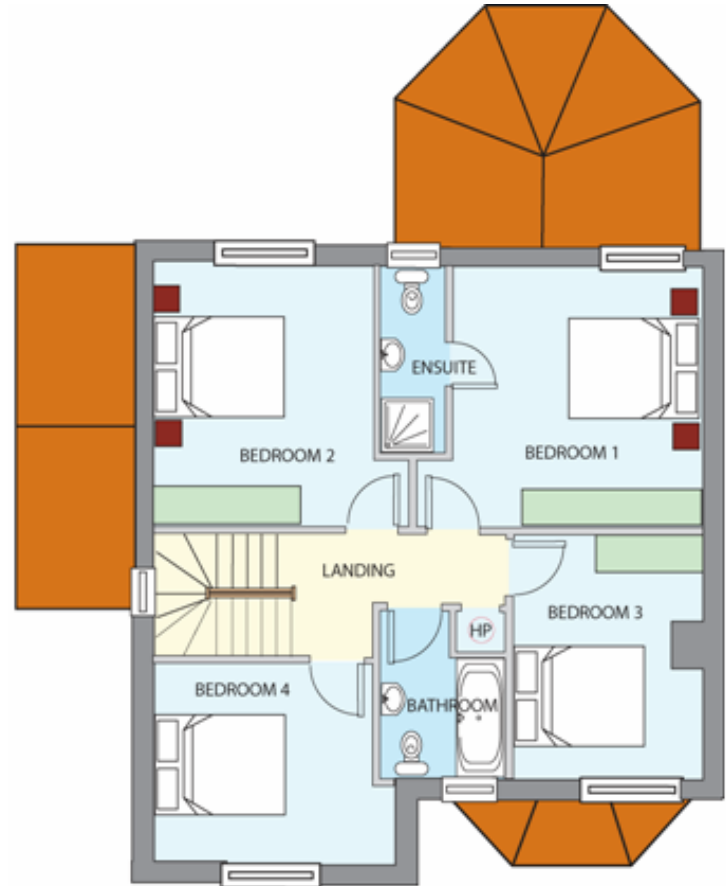
Kitchen	4.90m x 3.10m
Dining	3.10m x 4.60m
Utility	3.10m x 1.80m
WC	1.61m x 1.98m
Living	4.00m x 6.50m



First Floor

Bedroom 1	4.00m x 4.46m
Ensuite 1	2.50m x 1.45m
Bedroom 2	3.40m x 4.84m
Ensuite 2	0.90m x 2.30m
Bedroom 3	2.80m x 3.95m
Bedroom 4	2.90m x 2.31m
Bathroom	2.50m x 1.90m

House Type B (152.15 sq. m, 1637 sq. ft.)



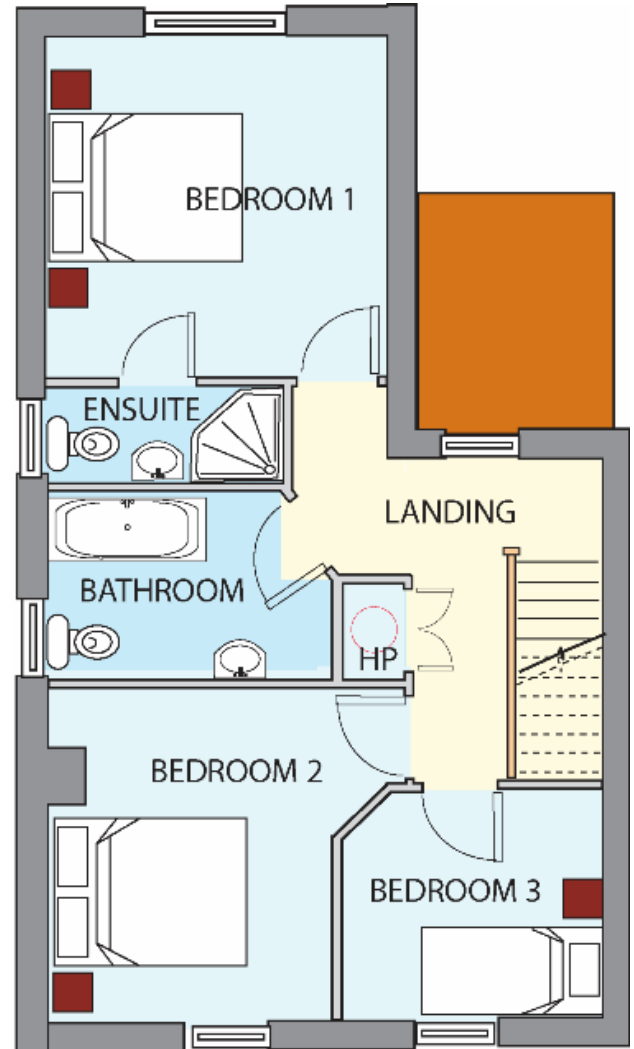
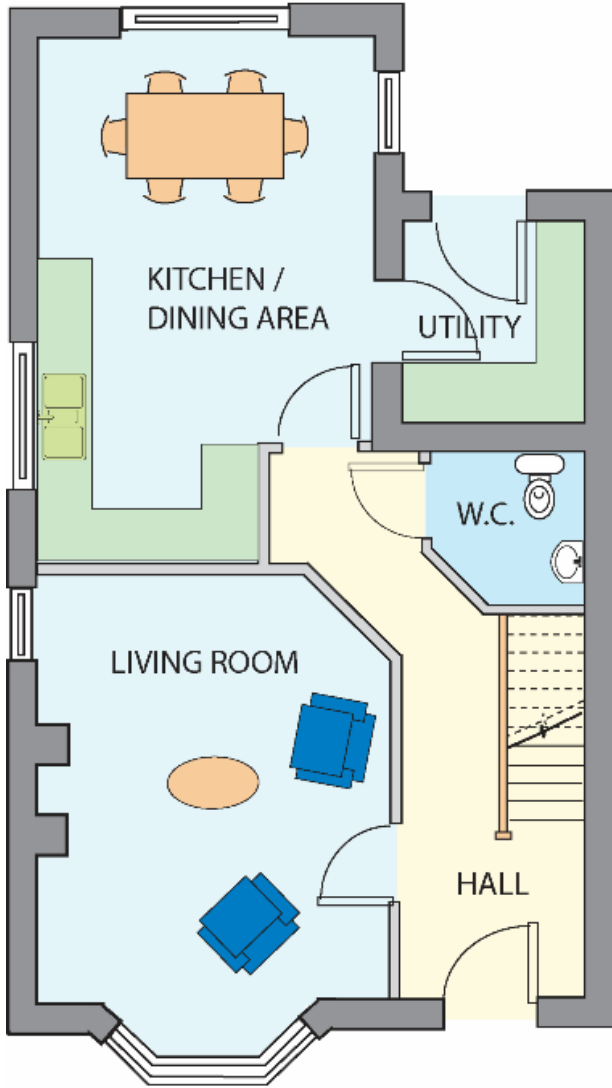
Ground Floor

Kitchen	3.66m x 3.90m
Dining	3.90m x 4.56m
Utility	1.55m x 4.18m
WC	1.40m x 1.85m
Living	4.75m x 4.56m
Conservatory	3.50m x 3.00m

First Floor

Bedroom 1	3.78m x 3.90m
Bedroom 2	3.35m x 3.90m
Bedroom 3	2.85m x 3.65m
Bedroom 4	3.66m x 3.07m
Bathroom	1.90m x 2.50m
Ensuite	1.00m x 2.80m

House Type C (106.80 sq. m, 1150 sq. ft.)

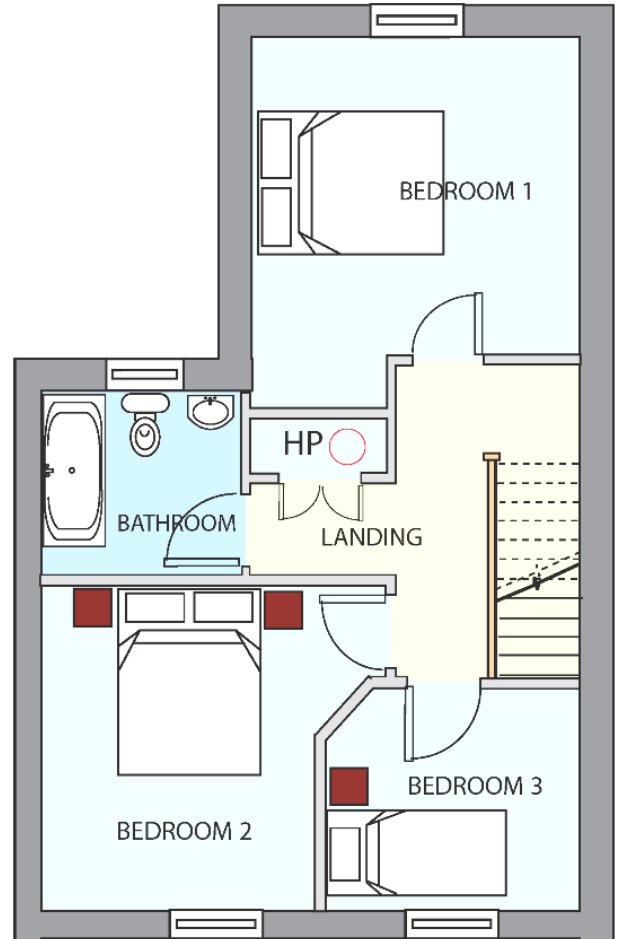
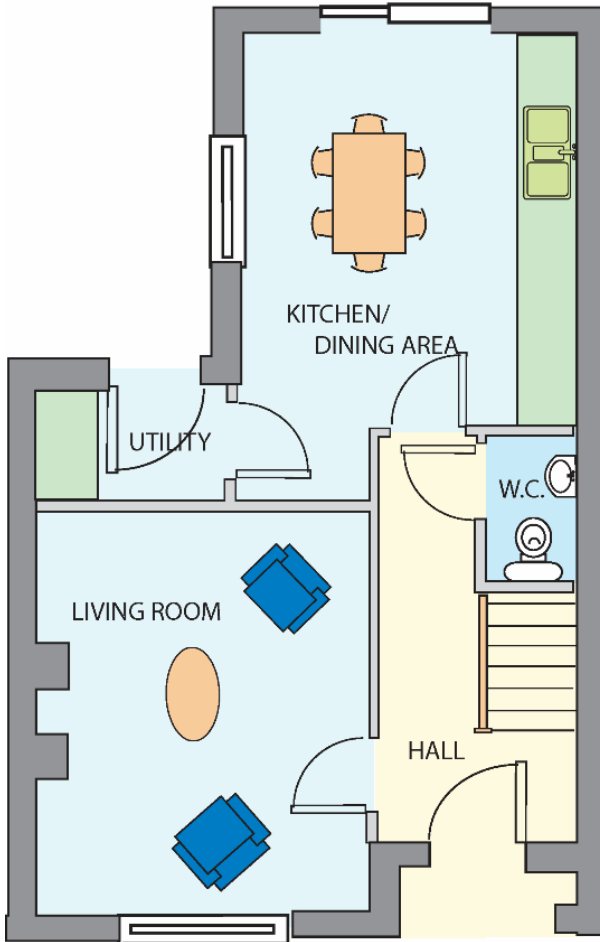


Ground Floor

Kitchen/Dining	3.60m x 5.70m
Utility	2.00m x 2.20m
WC	1.70m x 1.65m
Living	4.60m x 3.80m

First Floor

Bedroom 1	3.60m x 3.60m
Bedroom 2	3.00m x 3.60m
Bedroom 3	2.80m x 2.40m
Bathroom	3.50m x 2.00m
Ensuite	2.50m x 1.00m



Ground Floor

Kitchen/Dining	3.60m x 4.25m
Utility	1.65m x 2.10m
WC	1.00m x 1.60m
Living	3.60m x 4.30m

First Floor

Bedroom 1	3.60m x 4.10m
Bedroom 2	2.90m x 3.60m
Bedroom 3	2.85m x 2.40m
Bathroom	2.10m x 2.36m